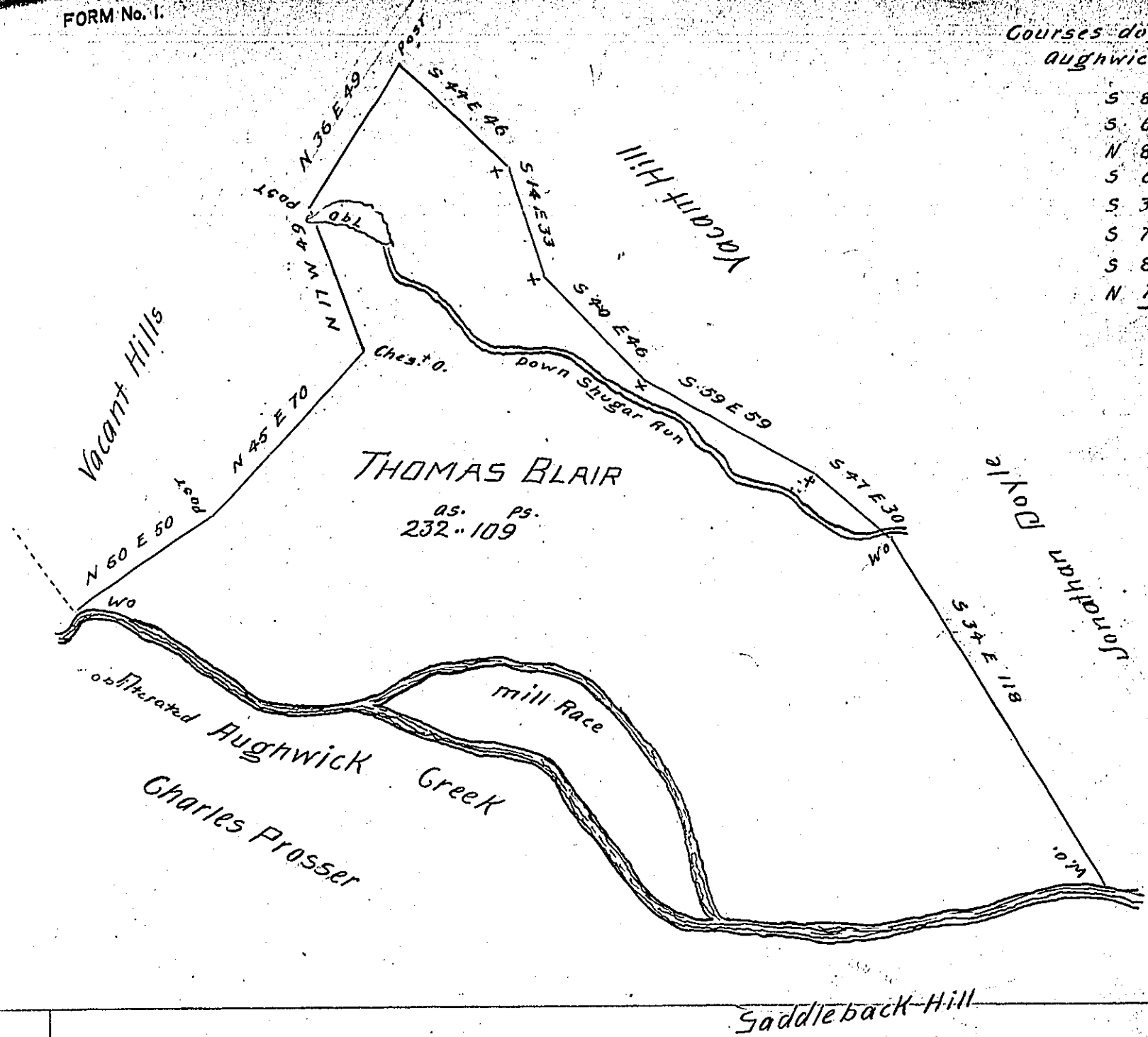


Courses down
Aughwick

S 82 E 16
S 60 E 60
N 87 E 27
S 69 E 58
S 35 E 51
S 74 E 20
S 85 E 43
N 79 E 80
354



Situate in Shirley Township Huntingdon County on the north side of great Aughwick Creek containing two hundred & thirty two acres and one hundred and nine Perches and the usual allowance of six per Cent for Roads &c^a - SURVEYED the 8th day of march 1788 In pursuance of a Warrant dated the 30th Day of november 1787

John Canan D.S.

Samuel Cochran Esquire
Surveyor General

IN TESTIMONY that the above is a copy of the original remaining on file in the Department of Internal Affairs of Pennsylvania, made conformably to an Act of Assembly approved the 16th day of February, 1833, I have hereunto set my Hand and caused the Seal of said Department to be affixed at Harrisburg, this twenty first day of December 1903

Samuel P. Benson
Secretary of Internal Affairs.